

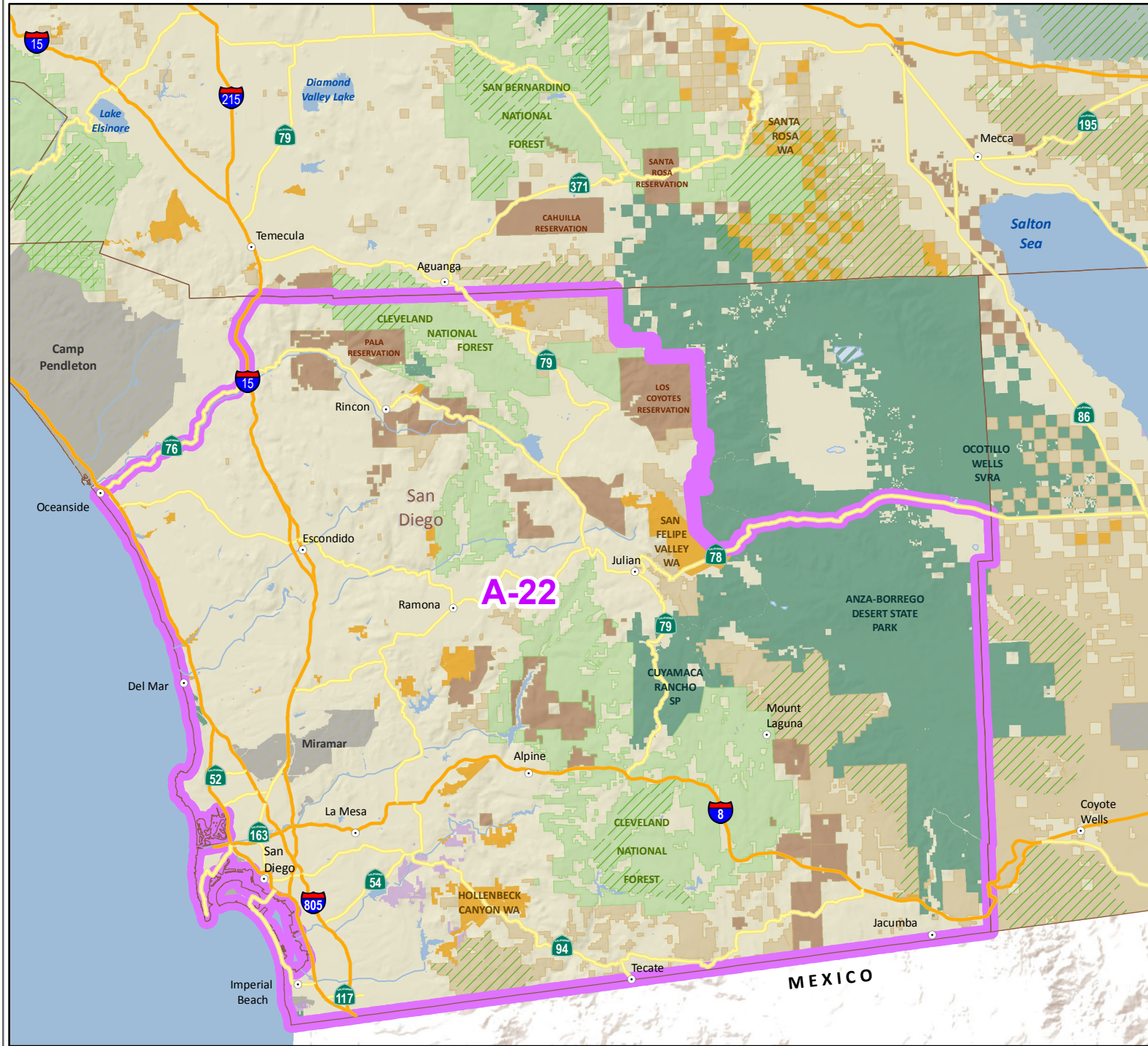
CALIFORNIA DEPARTMENT OF FISH & WILDLIFE

DEER HUNT A-22

San Diego Archery
Either-Sex Deer Hunt



San Diego County



- A-22
- ◆ CA Dept. of Fish & Wildlife
- ◆ CA Dept. of Parks & Rec.
- ◆ U.S. Fish & Wildlife Service
- ◆ U.S. Forest Service
- ◆ U.S. National Park Service
- ◆ U.S. BLM
- ◆ Wilderness Area
- ◆ Tribal Land
- ◆ U.S. Dept. of Defense

Hunt boundary shown is an approximation. Hunters are responsible for knowing the exact boundary locations as described within Calif. Code of Regs Title 14, Section 361(b)(20) A-22 (San Diego Archery Either-Sex Deer Hunt).

